



Operating manual

Version 1.0

Grinding machine

- GQ 120**  Item no. 3141000
- GQ 150**  Item no. 3141010
- GQ 200**  Item no. 3141020
- GQ 150 Q**  Item no. 3141050
- GQ 150 B**  Item no. 3141060






Table of contents

1	Safety	
1.1	Safety instructions (warning notes).....	3
1.1.1	Classification of hazards	3
1.1.2	Other pictograms.....	4
1.2	Intended use.....	4
1.3	Reasonably foreseeable misuse.....	5
1.3.1	Avoiding misuse	5
1.4	Possible dangers caused by the grinding machine	5
1.5	Personnel qualification.....	6
1.5.1	Target group.....	6
1.6	Operator positions	7
1.7	Safety measures during operation.....	7
1.8	Safety devices	7
1.8.1	Spark-guard and support surface.....	7
1.9	Safety check	8
1.10	Personal protective equipment	8
1.11	For your own safety during operation	8
1.12	Disconnecting and securing the grinding machine	8
1.13	Emissions	8
1.14	Basic information on grinding wheels	9
2	Technical specification	
3	Unpacking and connecting	
3.1	Scope of delivery	10
3.2	Storage	10
3.3	Set-up and assembly	11
3.3.1	Installation site requirements	11
3.4	First commissioning	11
3.5	First commissioning	11
3.5.1	Power supply.....	12
4	Operation	
5	Inspection and maintenance	
5.1	Replacing a grinding wheel.....	13
5.2	Repair	13
6	Appendix	
6.1	Copyright	13
6.2	Liability claims/warranty.....	13
6.3	Advice for disposal / Options of reuse:	14
6.3.1	Decommission.....	14
6.3.2	Disposal of new device packaging	14
6.3.3	Disposal of electrical and electronic components	15
6.4	Disposal through municipal collection facilities	15
6.5	Product follow-up	15
7	Ersatzteile - Spare parts	
7.1	Ersatzteilbestellung - Ordering spare parts	16
7.2	Hotline Ersatzteile - Spare parts Hotline.....	16
7.3	Service Hotline.....	16
7.4	Ersatzteilzeichnungen - Spare part drawings	17
7.4.1	GQ 120 GQ 150	17
7.4.2	GQ 200.....	19
7.4.3	GQ 150 Q.....	21
7.4.4	GQ 150 B	23
7.5	Schaltplan - Wiring diagram.....	25



1 Safety

Glossary of symbols

	provides further instructions
	calls on you to act
	listings

This part of the operating instructions

- explains the meaning and use of the warning notes included in these operating instructions,
- defines the intended use of the grinding machine,
- points out the dangers that might arise for you or others if these instructions are not observed,
- informs you about how to avoid dangers.

In addition to these operating instructions, please observe




- the applicable laws and regulations,
- the statutory provisions for accident prevention,
- the prohibition, warning and mandatory signs as well as the warning notes on the grinding machine.

Always keep this documentation close to the grinding machine.

1.1 Safety instructions (warning notes)

1.1.1 Classification of hazards

We classify the safety warnings into different categories. The table below gives an overview of the classification of symbols (ideogram) and the warning signs for each specific danger and its (possible) consequences.

Symbol	Alarm expression	Definition / consequence
	DANGER!	Impending danger that will cause serious injury or death to people.
	WARNING!	A danger that can cause serious injury or death.
	CAUTION!	A danger or unsafe procedure that can cause personal injury or damage to property.
	ATTENTION!	Situation that could cause damage to the grinding machine and product, as well as other types of damage. No risk of injury to persons.
	INFORMATION	Practical tips and other important or useful information and notes. No dangerous or harmful consequences for people or objects.

GQ120_GQ150_GQ200_GQ150Q_GQ150B_GB_fm



1.1.2 Other pictograms



Warning: flammable substances!



Warning: suspended loads!



Risk of tripping!



Warning: tilting danger!



Warning: automatic start-up!



Warning: biological hazard!



Warning: injuries to hands!



Read the operating instruction!



Pull out the mains plug!



Wear protective glasses!



Use face shield!



Wear safety shoes!



Wear a protective suit!



Use ear protection!



Protect the environment!

1.2 Intended use

WARNING!

In the event of improper use, the grinding machine

- this may result in hazards for personnel,
- the grinding machine and other material property of the operating company will be endangered,
- the functionality of the grinding machine may be compromised.



The grinding machine is designed and manufactured exclusively for grinding and polishing metals using properly authorised grinding wheels, sanding belts or polishing wheels.

The grinding machine must be used exclusively for this purpose.

If the grinding machine is used in any other way than described above or modified without the authorisation of Stürmer Maschinen GmbH, the grinding machine is no longer being used as intended.

We will not be held liable for any damages resulting from any operation which is not in accordance with the intended use.

We expressly point out that any design, technical or procedural modifications not authorised by Stürmer Maschinen GmbH will also invalidate the warranty. Part of the intended use is that you

- comply with the performance limits of the grinding machine: S6 40% operation and S6 10% operation.
- observe the operating instructions
- and comply with the inspection and maintenance instructions.



WARNING!

Extremely severe injuries due to non-intended use.

It is forbidden to make any modifications or alternations to the operating parameters values of the grinding machine. They could pose an accident hazard to persons and cause damage to the grinding machine.



ATTENTION!

If the grinding machine is not used as intended or if the safety directives or the operating instructions are ignored the liability of the manufacturer for any damages to personnel or objects resulting hereof is excluded and the claim under guarantee is becoming null and void!



1.3 Reasonably foreseeable misuse

Any use other than that specified under "Intended use" or any use beyond that described will be deemed non-intended use and is not permissible.

Any other use must be discussed with the manufacturer.

In order to avoid misuse, it is necessary to read and understand the operating instructions before first commissioning.

Operators must be duly qualified.

1.3.1 Avoiding misuse

- The distance between the contact surface and the grinding disc must not exceed 2 mm. However, the distance may be greater if the grinding process and the material used require this for security reasons.
- Cleaning brushes and sanding brushes may only be used on the GQ150B. Only the protective cover on this grinding machine is suitable for wire brushes.
- Grinding wheels must not be installed in places that are designed for cleaning brushes.

We expressly point out that any design, technical or procedural modifications not authorised by Stürmer Maschinen GmbH will also invalidate the warranty.

WARNING!

Risk of injury caused by flying workpieces.

Ensure the gap between the grinding wheel and bearing surface is as small as possible and readjust the support surface immediately if the distance is too big.

If the support surface can no longer be adjusted, the grinding wheel must be replaced.



1.4 Possible dangers caused by the grinding machine

The grinding machine was built using state-of-the-art technology. Nevertheless, there is a residual risk, as the grinding machine operates with

- high speeds,
- rotating parts,
- with grinding wheels (emission of sparks),
- electrical voltage and currents.

We have minimized the risk to people's health from these hazards through design and safety technology.

If the grinding machine is used and maintained by personnel who are not duly qualified, there may be a risk resulting from its incorrect or unsuitable maintenance.

INFORMATION

Everyone involved in the assembly, commissioning, operation and maintenance must



GQ120_GQ150_GQ200_GQ150Q_GQ150B_GB_fm



- be duly qualified,
- and strictly follow these operating instructions.

Always disconnect the grinding machine from the electrical power supply before performing cleaning or maintenance tasks.

WARNING!

The grinding machine may only be used with fully functional safety devices.

Disconnect the grinding machine immediately, whenever you detect a failure in the safety devices or when they are not fitted!

All additional devices installed by the operator must be equipped with the stipulated safety devices.

This is your responsibility as the operator!

 **Safety devices on page 7**



1.5 Personnel qualification

1.5.1 Target group

This manual is addressed to

- the operating companies,
- the operators,
- the maintenance personnel.

Consequently, the warning notes refer both to the use of the grinding machine and to its maintenance.

Always disconnect the grinding machine from the electrical power supply. This will prevent it from being used by unauthorized persons.

The qualifications of the personnel for the different tasks are mentioned below:

Operator

The operator has been instructed by the operating company regarding the assigned tasks and possible risks in case of improper behaviour. The user may only carry out tasks that exceed normal operation if this is stated in these instructions and the operator has explicitly entrusted him with the task.

Qualified electrician

With professional training, knowledge and experience as well as knowledge of respective standards and regulations, qualified electricians are able to perform work on the electrical system and recognise and avoid any possible dangers.

Qualified electricians have been specially trained for the working environment, in which they are working and know the relevant standards and regulations.

Qualified personnel

Due to their professional training, knowledge and experience as well as knowledge of relevant regulations, qualified personnel are able to perform the assigned tasks and to independently recognise and avoid any possible dangers.

Instructed person

Instructed persons were instructed by the operating company regarding the assigned tasks and any possible risks of improper behaviour.

INFORMATION

Everyone involved in the assembly, commissioning, operation and maintenance must





- be duly qualified,
- and strictly follow these operating instructions.

In the event of improper use

- there may be a risk to personnel,
- the grinding machine and other property and
- the functionality of the grinding machine may be compromised.

1.6 Operator positions

The user position is in front of the grinding machine. For machines with a sanding belt, the operator position on the sanding belt must be adapted to the workpiece being processed.

1.7 Safety measures during operation

CAUTION!

Danger due to inhaling dust and mist that are hazardous to health.

Depending on the materials to be machined and the agents used, dusts and mists can arise that are detrimental to health.

Ensure that the harmful dust and mist generated are safely sucked off at the point of origin and routed away from the working area or filtered.



1.8 Safety devices

The grinding machine must only be operated with fully functional safety devices.

Stop the grinding machine immediately if there is a failure on the safety device or becomes ineffective.

It is your responsibility!

If a safety device has been activated or has failed, the grinding machine must only be used if

- have eliminated the cause of the malfunction,
- have satisfied yourself that it does not pose any danger to persons or property.

WARNING!

If you bypass, remove or override a safety device in any other way, you are endangering yourself and other persons working with the grinding machine. The possible consequences include:

- injuries due to components or workpieces flying off at high speed,
- contact with rotating parts,
- fatal electrocution.

The grinding machine features the following safety devices:

- A spark protection on each grinding wheel.
- A protective guard with shaft cover on each grinding wheel.
- A support surface for the workpiece.

WARNING!

Although the isolating safety devices provided and delivered with the machine are designed to reduce the risks of workpieces being ejected or parts of tools or workpieces breaking off, they cannot eliminate these risks completely. Always work carefully and observe the limit values of the grinding process.



1.8.1 Spark-guard and support surface

Adjust the guard to the correct height before you start working. To do so, slacken the clamping screw, set the required height and re-tighten the clamping screw. Observe the correct distance to the grinding wheel.



1.9 Safety check

Check the grinding machine regularly.

Check all safety devices

- before starting work,
- once a week (with the machine in operation) and
- after all maintenance and repair work.

1.10 Personal protective equipment

For certain work personal protective equipment is required.

- Protect your face and your eyes: Wear a safety helmet with facial protection when performing work where your face and eyes are exposed to hazards.
Wear protective gloves when handling pieces with sharp edges.
- Use safety shoes when you assemble, disassemble or transport heavy components, or transport the grinding machine.
- Use ear protection if the noise level (emission) in the workplace exceeds 80 dB (A).
- Before starting work make sure that the required personal protective equipment is available at the work place.



CAUTION!

Dirty or contaminated personal protective equipment can cause illness. They must be cleaned after each use and at least once a week.



1.11 For your own safety during operation

WARNING!

Before switching on the grinding machine, make sure that no persons are endangered and no objects are damaged.



Avoid any unsafe work methods:

- The instructions mentioned in these operating instructions have to be strictly observed during assembly, operation, maintenance and repair.
- Use protective glasses!
- Do not work on the grinding machine, if your concentration is reduced, for example, because you are taking medication.
- Stay on the grinding machine until the working spindle has come to a complete standstill. Keep children away.
- Use the specified personal protective equipment. Ensure you wear close-fitting clothing and, if necessary, a hairnet.
- Make sure that your operation does not create a safety hazard.



1.12 Disconnecting and securing the grinding machine

Disconnect the mains plug before starting maintenance and repairs.



1.13 Emissions

The generation of noise emitted by the grinding machine is 70 to 80 dB(A). If the grinding machine is installed in an area where various machines are in operation, the noise exposure (immission) on the operator of the grinding machine at the working place may exceed 80 dB(A).

INFORMATION

This numerical value was measured on a new machine under the operating conditions specified by the manufacturer. The noise behaviour of the machine might change depending on the age and wear of the machine.



GQ120_GQ150_GQ200_GQ150Q_GQ150B_GB.fm



Furthermore, the noise emission also depends on production engineering factors, e.g. speed, material and clamping conditions.

INFORMATION

The specified numerical value represents the emission level and does not necessarily a safe working level. Though there is a dependency between the degree of the noise emission and the degree of the noise disturbance it is not possible to use it reliably to determine if further precaution measures are required or not. The following factors influence the actual degree of the noise exposure of the operator:



- Characteristics of the working area, e.g. size or damping behaviour,
- other noise sources, e.g. the number of machines,
- other processes taking place in proximity and the period of time, during which the operator is exposed to the noise.

Furthermore, it is possible that the admissible exposure level might be different from country to country due to national regulations. This information about the noise emission should, however, allow the operator of the machine to more easily evaluate the hazards and risks.

CAUTION!

Depending on the overall noise exposure and the basic threshold values, machine operators must wear appropriate hearing protectors. We generally recommend the use of noise and ear protection.



1.14 Basic information on grinding wheels

- Various shortcomings during installation and operation can lead to the bursting of grinding wheels.
- Ordinary grinding wheels are generally not designed to withstand a greater lateral load.
- The tapping off cutting debris from the grinding wheel always leads to damage of the grinding wheel.
- Grinding wheels which have an imbalance can burst more easily.
- An unbalance of a grinding wheel cannot be completely removed by trueing with a diamond dresser.
- Incorrectly stored grinding wheels can burst immediately after switching on, or individual small fragments can fly away like a bullet.



2 Technical specification

	GQ 120	GQ 150	GQ 200	GQ 150 Q	GQ 150 B
Electrical connection	230V ~50Hz (60Hz)				
Degree of protection	IPX0				
Motor power S1 Operation	105 W	190 W	250 W	190 W	190 W
* Motor power S6 / 40% duty cycle	150 W	-	-	-	-
* Motor power S6 / 10% duty cycle	-	250 W	400 W	250 W	250 W
Speed [min ⁻¹] (~50Hz)	2980				
Grinding wheel [mm] Outer diameter x width x mounting hole	125 x 16 x Ø12.7	150 x 20 x Ø12.7	200 x 20 x Ø16	150 x 20 x Ø12.7	150 x 20 x Ø12.7
Grinding speed, peripheral speed of the grinding wheel, steel brush at ~50Hz connection [m/s]	19.5	19.5	31.2	23.4	23.4
Grinding speed, peripheral speed of the grinding wheel, steel brush at ~60Hz connection [m/s]	23.4	23.4	37.5	28	28
Net weight [kg]	4.3	6.5	9.5	8.2	8

*Operating mode S6, duty cycle =40%, cycle time 10 min. The motor may run for 4 minutes under load and must then cool down for 6 minutes at idle, otherwise overheating would occur.

*Operating mode S6, duty cycle =10%, cycle time 10 min. The motor may run for 1 minute under load and must then cool down for 9 minutes at idle, otherwise overheating would occur.

3 Unpacking and connecting

The grinding machine is delivered pre-assembled.

3.1 Scope of delivery

Check the grinding machine immediately after delivery for transport damage, missing parts and loose locking bolts. Compare the scope of delivery with the delivery note. Grinding wheels and the cleaning brush for the GQ150B are available from specialist dealers or from our main catalogue.

3.2 Storage

ATTENTION!

Incorrect and improper storage might result in damage or destruction of electrical and mechanical machine components.

Store packed and unpacked parts only under the intended environmental conditions. Follow the instructions and information on the transport box.

Contact Stürmer Maschinen GmbH if the machine and accessories need to be stored for longer than three months and under ambient conditions other than those specified.





3.3 Set-up and assembly

3.3.1 Installation site requirements

Organise the working area around the grinding machine according to the local safety regulations.

WARNING!

The grinding machine must be firmly connected to the substructure.



INFORMATION

In order to achieve high levels of functionality and machining accuracy, as well as a long service life of the machine, the set-up location should meet certain criteria.



The following points should be noted:

- The device must only be installed and operated in a dry and well-ventilated place.
- Avoid places close to machines which cause chips or dust.
- The installation site must be vibration-free, i.e. located away from presses, planing machines, etc.
- The foundation must be suitable for the grinding machine. Also make sure that the floor has sufficient load bearing capacity and is level.
- The ground must be prepared in such a way that any coolant used cannot penetrate the ground.
- Any parts sticking out such as stops, handles, etc. have to be secured by measures taken by the customer if necessary in order to avoid endangering persons.
- Provide enough space for set-up and operating personnel and material transport.
- Also bear in mind accessibility for installation and maintenance works.
- Ensure adequate lighting is available (minimum value: 500 Lux, measured at the tool tip). In the event of a lower level of lighting, additional illumination must be provided, e.g. by means of a separate workplace light.
- The power plug of the grinding machine must be readily accessible.

CAUTION!

Position the power lead for the machine in such a manner that people cannot trip over it.



3.4 First commissioning

For first commissioning, the grinding wheels must be trued with a dressing stone to ensure the true running of the grinding wheels.

Grinding wheels made from compound abrasives have a natural imbalance as a result of the pressing process during the manufacturing process. Compound grinding wheels have a higher or lower density in some areas. This natural imbalance cannot be removed with a dressing stone, however, the imbalance of the machine can be reduced by turning the grinding wheel, e.g. by 180° on the grinding wheel shaft.

3.5 First commissioning

ATTENTION!

Before commissioning the machine, all bolts, fastenings and protections must be checked and re-tightened as necessary!



WARNING!

Hazard due to the use of unsuitable grinding wheels and cleaning brushes. Only use grinding wheels and cleaning brushes that withstand the speed requirements and occurring loads.



GQ120_GQ150_GQ200_GQ150Q_GQ150B_GB_fm



WARNING!

First commissioned of the grinding machine by inexperienced personnel constitute a risk to personnel and equipment.

We do not accept any liability for damages caused by incorrectly performed commissioning.

Personnel qualification on page 6



3.5.1 Power supply

- Connect the electrical supply cable.
- Check the fusing (fuse) of your electrical supply.

4 Operation

ATTENTION!

Comply with performance limits. S6 40% and S6 10%. An explanation of the performance limits can be found in the technical data.

Avoiding misuse on page 5

- Before you start grinding, check that the workpiece is free of oil, grease and paint residues to prevent smudging or soiling of the grinding wheels.
- Check the condition of the grinding wheels. If the grinding wheels are dirty or muddied, they must be roughened or replaced.
- If necessary, grind the workpiece with the coarse grinding wheel first, before using the fine grinding wheel.

The workpiece support can be adjusted for certain grinding operations. Loosen the clamping screw to adjust the workpiece support.

- Note that this adjustment results in a reduced potential load absorption of the workpiece support.
- The distance between the grinding wheel and workpiece support must be as low as possible.
- Only put slight pressure on the workpiece.
- If a grinding wheel is heavily soiled, the surface must be roughened again with a hand leveler.
- Grinding wheels must be disposed of in an environmentally friendly manner.
- Only use clean tap water for the wet grinding disc on the GQ 150 Q.



5 Inspection and maintenance

WARNING!

Disconnect the mains plug before carrying out any work on the grinder.

INFORMATION

The bearing is lifetime-lubricated. It is not necessary to lubricate it again.

The angular gear (worm gear) for reducing the speed of the wet grinding disc on the GQ 150 Q is permanently lubricated. It is not necessary to lubricate it again.

WARNING!

Grinding wheels must be replaced, if there is an excessive distance between the external diameter of the grinding wheel and the completely readjusted workpiece support.



GQ120_GQ150_GQ200_GQ150Q_GQ150B_GB.fm



5.1 Replacing a grinding wheel

- Disassemble the protective cover of the grinding wheel.
- Loosen the shaft nut. The left-hand nut has a left-hand thread, the right-hand nut a right-hand thread.
- Hold the grinding wheel tight to loosen the nut. Ensure the correct direction of rotation for loosening the nut on the grinding disc shaft.
- Pull off the grinding wheel and the retaining washer from the shaft by hand.
- Check the new grinding wheel for visible damage prior to assembly.
- Before the grinding wheel is loaded for a grinding process, the concentricity of the grinding wheel must be checked.

5.2 Repair

Stürmer Maschinen GmbH accepts no liability or guarantee for damage or malfunctions resulting from non-compliance with these operating instructions.

For repairs, only use

- faultless and suitable tools only,
- only original spare parts or standard parts expressly approved by Stürmer Maschinen GmbH.

6 Appendix

6.1 Copyright

This document is protected by copyright. All derived rights are reserved, especially those of translation, re-printing, use of figures, broadcast, reproduction by photo-mechanical or similar means and recording in data processing systems, either partial or total.

Subject to technical changes without notice.

6.2 Liability claims/warranty

The manufacturer of the product, Stürmer Maschinen GmbH, Dr. Robert-Pfleger-Straße 26, D-96103 Hallstadt, Germany, does not grant you any further guarantees in addition to the buyer's statutory claims for defects against the seller, unless they are listed here or have been promised as part of an individual contractual rule..

- Stürmer Maschinen GmbH may choose to settle liability or warranty claims either directly with Stürmer Maschinen GmbH or via one of its dealers.
Any defective products or components of such products will either be repaired or replaced by components which are free from defects. Replaced products or components become our property.
- The automatically generated original proof of purchase which shows the date of purchase, the type of machine and the serial number, if applicable, is the precondition in order to assert liability or warranty claims. If the original proof of purchase is not presented, we are not able to perform any services.
- Defects resulting from the following circumstances are excluded from liability and warranty claims:
 - Using the product beyond the technical options and proper use, in particular due to overstraining of the machine.
 - Self-inflicted damage due to incorrect operation and disregard of our operating instruc-



tions

- Inattentive or incorrect handling and use of improper equipment
- Unauthorized modifications and repairs
- Insufficient installation and safeguarding of the machine
- Disregarding the installation requirements and conditions of use
- atmospheric discharges, overvoltage and lightning strokes as well as chemical influences
- The following articles are also not subject to liability or guarantee:
 - Wearing parts and components which are subject to normal and intended wear, such as V-belts, ball bearings, lighting, filters, seals, etc.
 - Non reproducible software errors
- Services provided by Stürmer Maschinen GmbH or one of its vicarious agents for fulfilment within the scope of an additional guarantee are neither an acknowledgement of a defect nor an acknowledgement of liability. These services neither delay nor interrupt the warranty period.
- The court of jurisdiction for legal disputes between businessmen is Bamberg.
- If any of the aforementioned agreements is totally or partially inoperative and/or invalid, a provision which nearest approaches the intent of the guarantor and remains within the framework of the limits of liability and warranty which are specified by this contract is deemed agreed.

6.3 Advice for disposal / Options of reuse:

Please dispose of your equipment in an environmentally friendly manner, by not placing waste in the environment but in a professional manner.

Please do not simply throw away the packaging and later the disused machine, but dispose of both in accordance with the guidelines laid down by your city council/local authority or by an authorised disposal company.

6.3.1 Decommission

CAUTION!

Immediately decommission used machines in order to avoid later misuse and endangering of the environment or of persons.



- **Unplug the power cord.**
- **Cut the connection cable.**
- **Remove all operating materials from the used device which are harmful to the environment.**
- **If applicable remove batteries and accumulators.**
- **Disassemble the machine if required into easy-to-handle and reusable assemblies and component parts.**
- **Dispose of machine components and operating fluids using the intended disposal methods.**

6.3.2 Disposal of new device packaging

All used packaging materials and packaging aids from the machine are recyclable and generally need to be supplied to the material reuse.

The packaging wood can be supplied to the disposal or the reuse.

Any packaging components made of cardboard box can be chopped up and supplied to the waste paper collection.

The films are made of polyethylene (PE) and the cushion parts are made of polystyrene (PS). These materials can be reused after reconditioning if they are passed to a collection station or to the appropriate waste management enterprise.

Only forward the packaging materials correctly sorted to allow direct reuse.



INFORMATION

Please take care in your interest and in the interest of the environment that all component parts of the machine are only disposed of in the intended and admitted way.



Please note that the electrical devices comprise a variety of reusable materials as well as environmentally hazardous components. Please ensure that these components are disposed of separately and professionally. In case of doubt, please contact your municipal waste management. If appropriate, call on the help of a specialist waste disposal company for the treatment of the material.

6.3.3 Disposal of electrical and electronic components

Please make sure that the electrical components are disposed of professionally and according to the statutory provisions.

The device is composed of electrical and electronic components and must not be disposed of as household waste. According to the European Directive regarding electrical and electronic used devices and the implementation of national legislation, used power tools and electrical machines need to be collected separately and supplied to an environmentally friendly recycling centre.



As the machine operator, you should obtain information regarding the authorised collection or disposal system which applies for your company.

Please make sure that the electrical components are disposed of professionally and according to the legal regulations. Please only throw depleted batteries in the collection boxes in shops or at municipal waste management companies.

6.4 Disposal through municipal collection facilities

Disposal of used electrical and electronic components

(Applicable in the countries of the European Union and other European countries with a separate collecting system for those devices).

The sign on the product or on its packing indicates that the product must not be handled as common household waste, but that it needs to be disposed of at a central collection point for recycling. Your contribution to the correct disposal of this product will protect the environment and the public health. Incorrect disposal constitutes a risk to the environment and public health. Recycling of material will help reduce the consumption of raw materials. For further information about the recycling of this product, please consult your District Office, municipal waste collection station or the shop where you have purchased the product.



6.5 Product follow-up

We are required to perform a follow-up service for our products which extends beyond shipment.

We would be grateful if you could send us the following information:

- Modified settings
- Experiences with the grinding machine that are important for other users.
- Recurring failures of the grinding machine.

GQ120_GQ150_GQ200_GQ150Q_GQ150B_GB.fm

7 Ersatzteile - Spare parts

7.1 Ersatzteilbestellung - Ordering spare parts

Bitte geben Sie folgendes an - *Please indicate the following* :

- Seriennummer - *Serial No.*
- Maschinenbezeichnung - *Machines name*
- Herstellungsdatum - *Date of manufacture*
- Artikelnummer - *Article no.*

Die Artikelnummer befindet sich in der Ersatzteilliste. *The article no. is located in the spare parts list.* Die Seriennummer befindet sich am Typschild. *The serial no. is on the rating plate.*

7.2 Hotline Ersatzteile - Spare parts Hotline



+49 (0) 951-96555 -118

ersatzteile@stuermer-maschinen.de



7.3 Service Hotline



+49 (0) 951-96555 -100

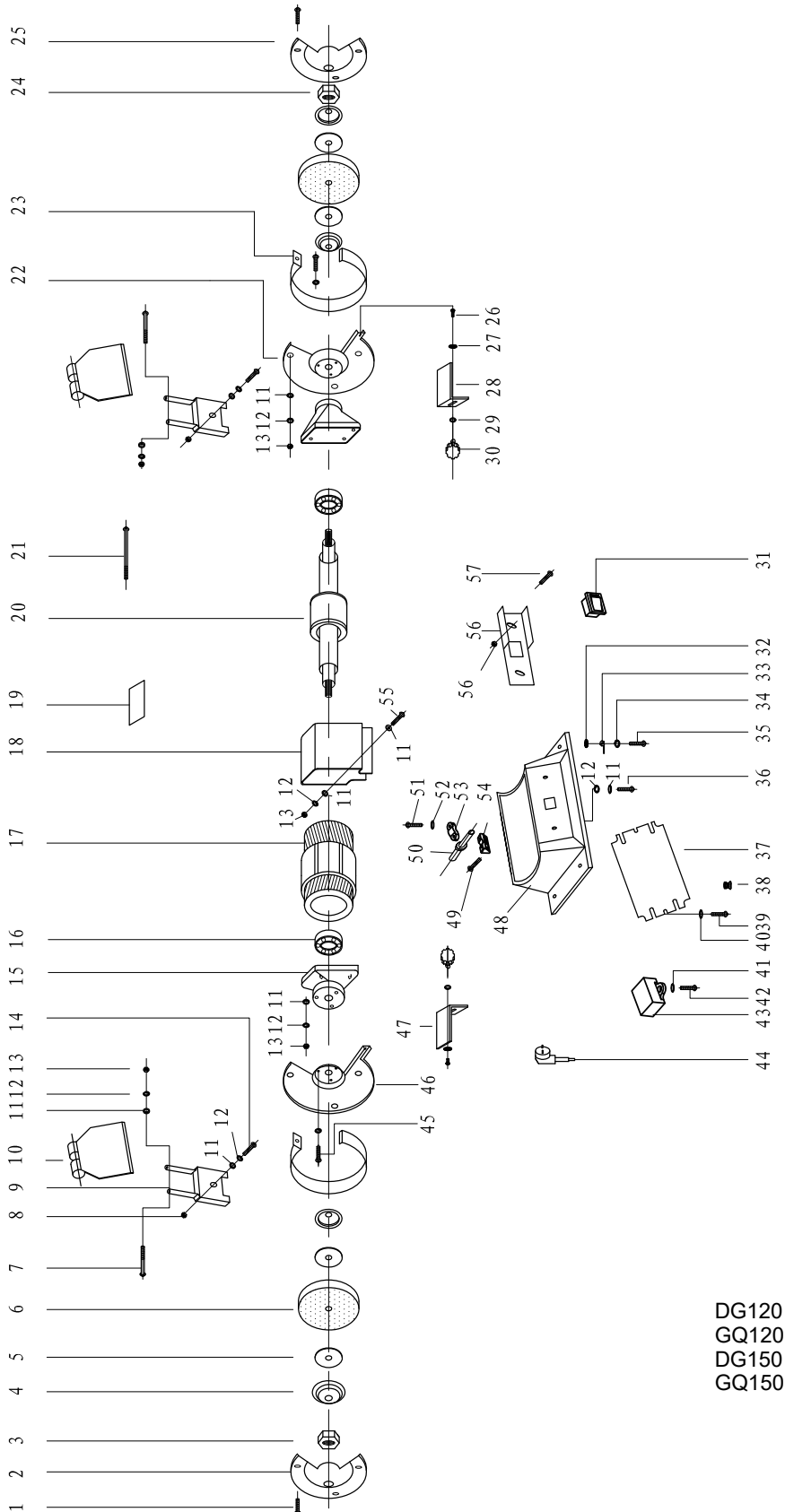
service@stuermer-maschinen.de



7.4 Ersatzteilzeichnungen - Spare part drawings

7.4.1 GQ 120 | GQ 150

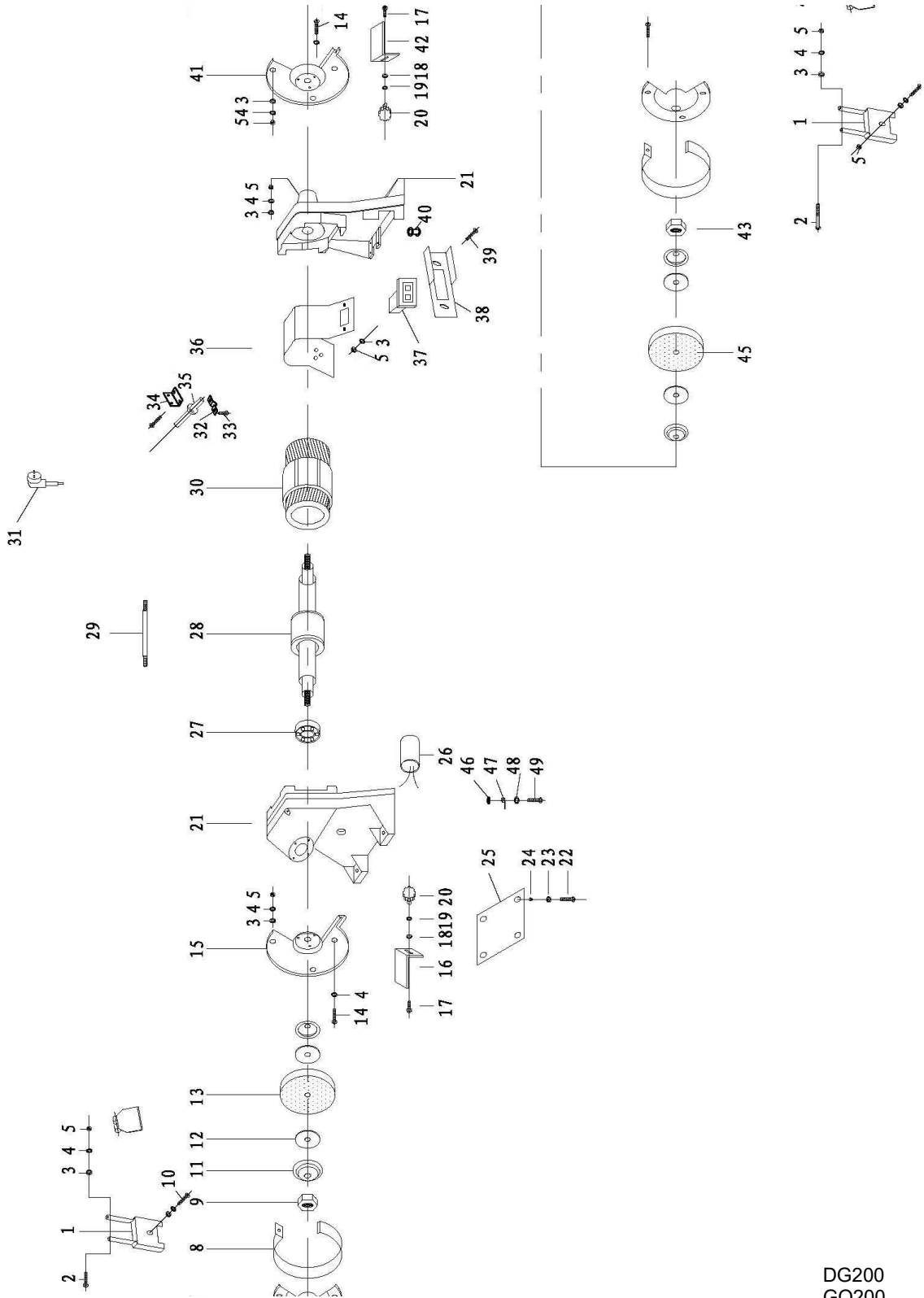
GQ120_GQ150_GQ200_GQ150Q_GQ150B_parts.fm



DG120
GQ120
DG150
GQ150

GQ 120 GQ 150					
Pos.	Bezeichnung	Description	Menge Qty.	Artikelnummer	
				Item no.	
				GQ 120	GQ 150
1	Schraube	Bolt	6	0314100001	0314101001
2	Außerer Schutz	Outer guard	1	0314100002	0314101002
3	Mutter	Nut	1	0314100003	0314101003
4	Radflansch	Wheel flange	4	0314100004	0314101004
5	Typenschild des Rades	Nameplate of wheel	4	0314100005	0314101005
6	Rad	Wheel	2	0314100006	0314101006
7	Schraube	Bolt	2	0314100007	0314101007
8	Schraube	Screw	2	0314100008	0314101008
9	Halterung für das Augenschild	Eyeshield Bracket	2	0314100009	0314101009
10	Augenschutz	Eyeshield	2	0314100010	0314101010
11	Flache Scheibe	Flat Washer	18	0314100011	0314101011
12	Unterlegscheibe	Washer	23	0314100012	0314101012
13	Schraube	Screw	13	0314100013	0314101013
14	Schraube	Bolt	2	0314100014	0314101014
15	Abdeckung	Cover	2	0314100015	0314101015
16	Lager	Bearing	2	0314100016	0314101016
17	Stator	Stator	1	0314100017	0314101017
18	Motorgehäuse	Motor housing	1	0314100018	0314101018
19	Typenschild	Nameplate	1	0314100019	0314101019
20	Rotor	Rotor	1	0314100020	0314101020
21	Schraube	Bolt	4	0314100021	0314101021
22	Rechter innerer Schutz	Right Inner guard	1	0314100022	0314101022
23	Schutzkappe	Guard blet	2	0314100023	0314101023
24	Mutter	Nut	1	0314100024	0314101024
25	Außerer Schutz	Outer guard	1	0314100025	0314101025
26	Abdeckung	Cover	1	0314100026	0314101026
27	Schraube	Bolt	2	0314100027	0314101027
28	Rechte Werkzeugablage	Right tool rest	1	0314100028	0314101028
29	Unterlegscheibe	Washer	2	0314100029	0314101029
30	Knopfmutter	Knob nut	2	0314100030	0314101030
31	Schalter	Switch	1	0314100031	0314101031
32	Unterlegscheibe	Washer	1	0314100032	0314101032
33	Erdungsklemme	Ground terminal	1	0314100033	0314101033
34	Unterlegscheibe	Washer	1	0314100034	0314101034
35	Schraube	Bolt	1	0314100035	0314101035
36	Schraube	Bolt	2	0314100036	0314101036
37	Grundplatte	Base plate	1	0314100037	0314101037
38	Gummifuß	Rubber foot	4	0314100038	0314101038
39	Schraube	Bolt	2	0314100039	0314101039
40	Unterlegscheibe	Washer	2	0314100040	0314101040
41	Unterlegscheibe	Washer	1	0314100041	0314101041
42	Schraube	Bolt	1	0314100042	0314101042
43	Kondensator	Capacitor	1	0314100043	0314101043
44	Kabel	Cable	1	0314100044	0314101044
45	Schraube	Bolt	3	0314100045	0314101045
46	Linker innerer Schutz	Left Inner guard	1	0314100046	0314101046
47	Linke Werkzeugablage	Left tool rest	1	0314100047	0314101047
48	Grundkörper	Base	1	0314100048	0314101048
49	Schraube	Bolt	2	0314100049	0314101049
50	Kabeltülle	Cable Tube	1	0314100050	0314101050
51	Schraube	Bolt	2	0314100051	0314101051
52	Unterlegscheibe	Washer	2	0314100052	0314101052
53	Kabelschelle	Cable clip	1	0314100053	0314101053
54	Kabelbaum	Cable clump	1	0314100054	0314101054
55	Schraube	Bolt	1	0314100055	0314101055
56	Schalterplatte	Switch Plate	1	0314100056	0314101056
57	Schraube	Bolt	2	0314100057	0314101057

7.4.2 GQ 200

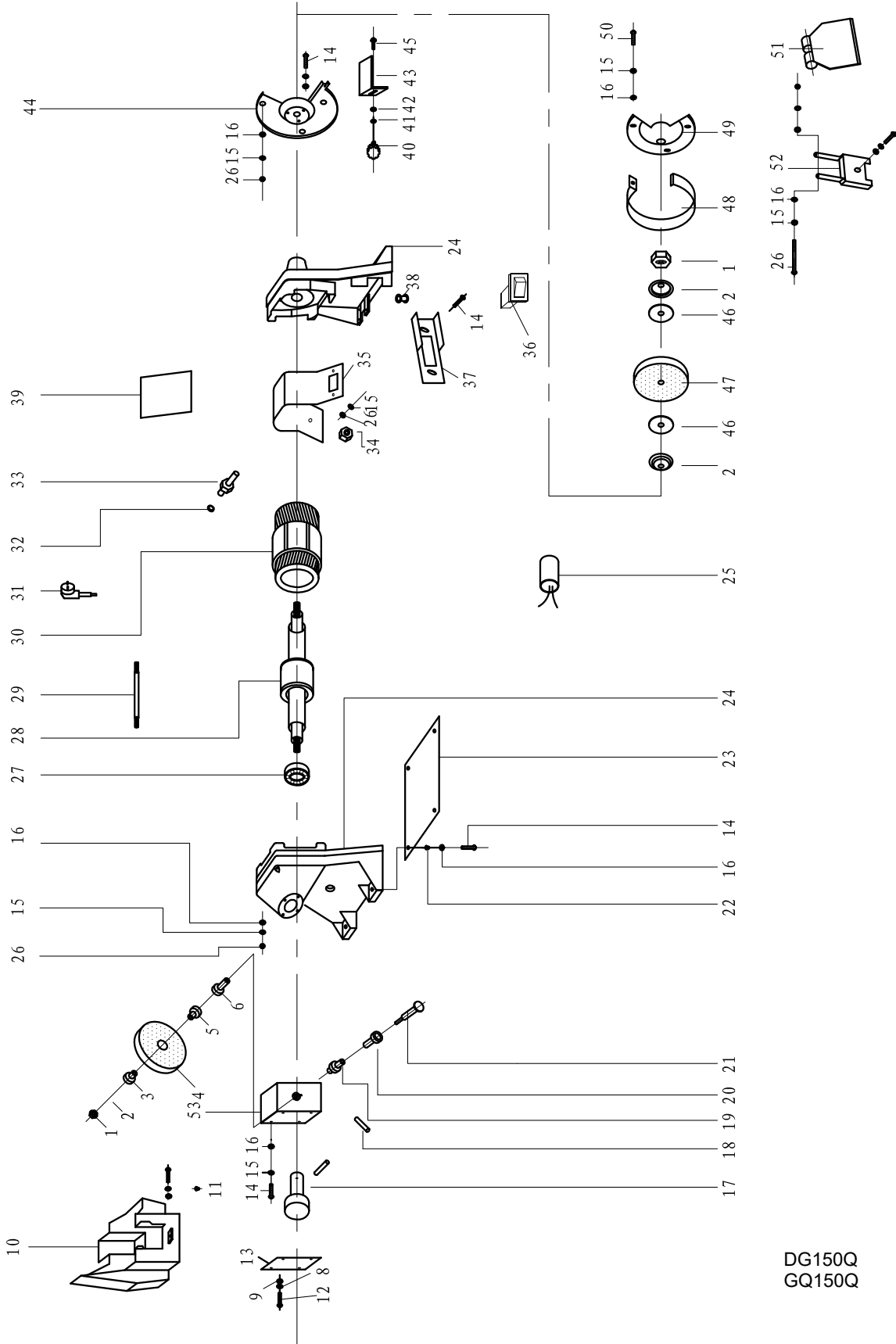


GQ120_GQ150_GQ200_GQ150Q_GQ150B_parts.fm

DG200
GQ200

GQ 200					
Pos.	Bezeichnung	Description	Menge Qty.	Größe Size	Artikelnummer
					Item no.
1	Halterung für das Augenschild	Eyeshield Bracket	2		GQ 200 0314102001
2	Kreuzschlitzschraube	Phillips screw	2	M5x35	
3	Flache Scheibe	Flat Washer	18	Ø5	
4	Unterlegscheibe	Washer	20	Ø5	
5	Schraube	Screw	12	M5	0314102005
6	Kreuzschlitzschraube	Phillips screw	6	M5x45	
7	Linker äußerer Schutz	Left Outer guard	2		0314102007
8	Mittlerer Ring	Middle ring	1		0314102008
9	Mutter	Nut	2	M12(left)	0314102009
10	Kreuzschlitzschraube, derzeit nicht in Gebrauch	Phillips screw, currently not in use		M5x10	
11	Radflansch	Wheel flange	4		0314102011
12	Typenschild des Rades	Nameplate of wheel	2		0314102012
13	Schleifscheibe	Grinder Wheel	1		0314102013
14	Schraube	Bolt	6	M5x10	0314102014
15	Linker innerer Schutz	Left Inner guard	1		0314102015
16	Linke Werkzeugablage	Left tool rest	2		0314102016
17	Schraube mit Vierkantansatz	Square Neck Screw	2	M6x12	0314102017
18	Innenverzahnung Unterlegscheibe	Inner tooth Washer	2	Ø6	0314102018
19	Flache Scheibe	Flat Washer	2	Ø6	0314102019
20	Knopfmutter	Knob Nut	2		0314102020
21	Hauptkörper	Main Body	2		0314102021
22	Kreuzschlitzschraube	Phillips screw	4	M5x10	
23	Unterlegscheibe	Washer	4	Ø5	0314102023
24	Gummifuß	Rubber Feet	4		0314102024
25	Grundplatte	Base Plate	1		0314102025
26	Kondensator	Capacitor	1		0314102026
27	Lager	Bearing	2		0314102027
28	Rotor	Rotor	1		0314102028
29	Kreuzschlitzschraube	Phillips screw	4	M5x125	
30	Stator	Stator	1		0314102030
31	Kabel	Cable	1		0314102031
32	Druckleitungskarte	Pressure line card	1		0314102032
33	Schraube	Screw	4		0314102033
34	Druckleitungsblock	Pressure line block	1		0314102034
35	Auslaufschlauch	Outlet hose	1		0314102035
36	Mittlerer Ring	Middle ring	1		0314102036
37	Schalter	Switch	1		0314102037
38	Schalttafel	Switch Panel	1		0314102038
39	Kreuzschlitzschraube	Phillips screw	2	M5x10	
40	Kabeladapter	Cable adaptor	1		0314102040
41	Rechter innerer Schutz	Right Inner guard	1		0314102041
42	Rechte Werkzeugablage	Right tool rest	1		0314102042
43	Mutter	Nut	1	M12	0314102043
44	Augenschutz	Eyeshield	2		0314102044
45	Rad	Wheel	1		0314102045
46	Innenverzahnung Unterlegscheibe	Inner tooth Washer	1	Ø4	
47	Erdungsklemme	Ground terminal	1		0314102047
48	Unterlegscheibe	Washer	1	Ø4	
49	Schraube	Screw	1	M4	

7.4.3 GQ 150 Q



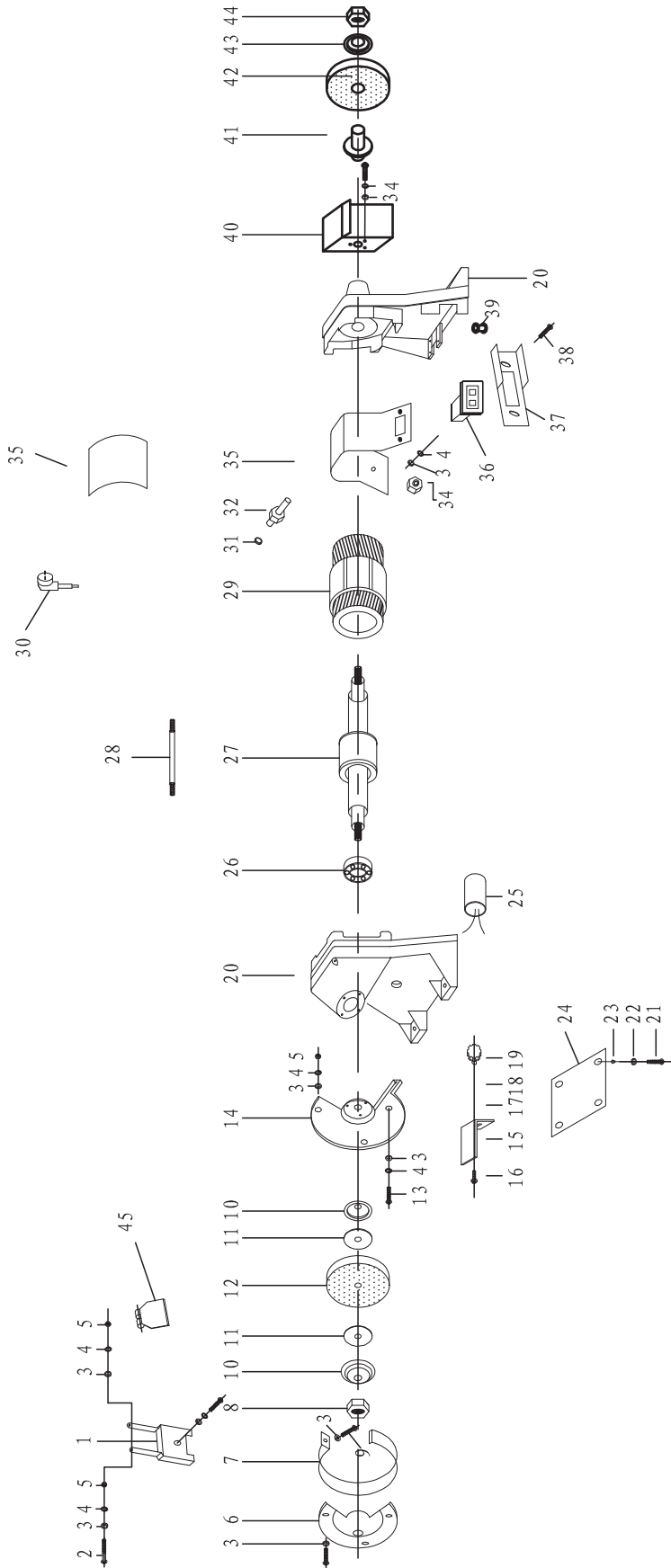
DG150Q
GQ150Q

GQ120_GQ150_GQ200_GQ150Q_GQ150B_parts.fm

GQ 150 Q				
Pos.	Bezeichnung	Description	Menge Qty.	Artikelnummer
				Item no.
				GQ 150 Q
1	Klemmmutter Handrad	Wheel Lock Nut	2	0314105001
2	Radflansch	Wheel flange	2	0314105002
3	Außerer Radkranz	Outer wheel flange	1	0314105003
4	Nass Schleifscheibe	Wet grinding wheel	1	0314105004
5	Innerer Radflansch	Inner wheel flange	1	0314105005
6	Zapfenlager	Journal Bearing	1	0314105006
7	Schraube	Bolt	3	0314105007
8	Unterlegscheibe	Washer	6	0314105008
9	Unterlegscheibe	Washer	6	0314105009
10	Wasserbehälter	Water Trough	1	0314105010
11	Gummi Kork	Rubber Cork	1	0314105011
12	Schraube	Bolt	3	0314105012
13	Deckplatte	Cover plate	1	0314105013
14	Schraube	Bolt	12	0314105014
15	Unterlegscheibe	Washer	25	0314105015
16	Unterlegscheibe	Washer	25	0314105016
17	Schnecke	Worm	1	0314105017
18	Stift	Pin	2	0314105018
19	Schneckenrad	Worm Wheel	1	0314105019
20	Zapfenlager	Journal Bearing	1	0314105020
21	Kurze Achse	Short Axis	1	0314105021
22	Gummifuß	Rubber Feet	4	0314105022
23	Grundplatte	Base plate	1	0314105023
24	Linker Hauptkörper	Left Main Body	2	0314105024
25	Kondensator	Capacitor	1	0314105025
26	Schraube	Screw	11	0314105026
27	Lager	Bearing	2	0314105027
28	Rotor	Rotor	1	0314105028
29	Schraube	Bolt	4	0314105029
30	Stator	Stator	1	0314105030
31	Kabel	Cable	1	0314105031
32	Weicher Schlauch	Soft tube	1	0314105032
33	Schraube	Bolt	4	0314105033
34	Presskabelplatte	Press cable plate	1	0314105034
35	Mittlerer Ring	Middle ring	1	0314105035
36	Europäischer Schalter	European switch	1	0314105036
37	Schalterplatte	Switch Plate	1	0314105037
38	Kabelschutz	Cable Protector	1	0314105038
39	Typenschild	Nameplate	1	0314105039
40	Arbeitsgriff	Work handle	1	0314105040
41	Unterlegscheibe	Washer	1	0314105041
42	Unterlegscheibe	Washer	1	0314105042
43	Werkzeugablage	Tool Rest	1	0314105043
44	Innerer Schutz	Inner guard	1	0314105044
45	Schraube mit Vierkantansatz	Square Neck Screw	1	0314105045
46	Typenschild des Rades	Nameplate of wheel	2	0314105046
47	Rad	wheel	1	0314105047
48	Wicklung	Winding	1	0314105048
49	Außerer Schutz	Outer guard	1	0314105049
50	Schraube	Bolt	1	0314105050
51	Augenschutz	Eyeshield	4	0314105051
52	Halterung für das Augenschild	Eyeshield Bracket	1	0314105052
53	Schneckengetriebegehäuse	Worm Gear Case	1	0314105053
54	Kabelklemme	Press cable clip	1	0314105054

7.4.4 GQ 150 B

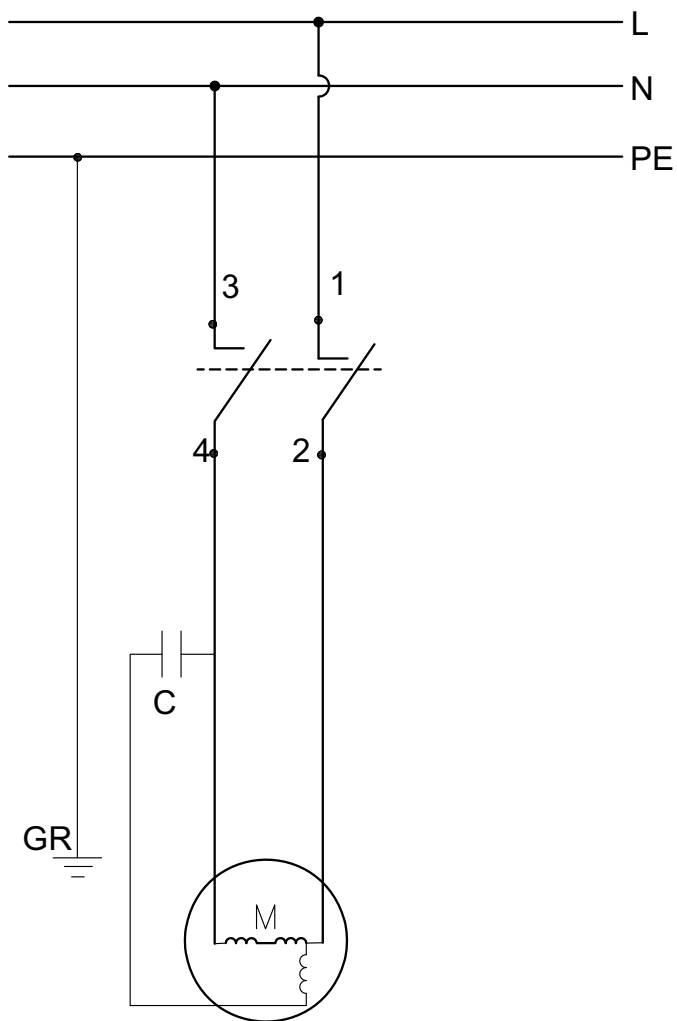
GQ120_GQ150_GQ200_GQ150Q_GQ150B_parts.fm



DG150B
GQ150B

GQ 150 B				
Pos.	Bezeichnung	Description	Menge Qty.	Artikelnummer
				Item no.
				GQ 150 B
1	Halterung für das Augenschild	Eyeshield Bracket	1	0314106001
2	Schraube	Bolt	4	0314106002
3	Unterlegscheibe	Washer	16	0314106003
4	Unterlegscheibe	Washer	12	0314106004
5	Schraube	Screw	5	0314106005
6	Linker äußerer Schutz	Left Outer guard	1	0314106006
7	Mittlerer Ring	Middle ring	1	0314106007
8	Mutter	Nut	1	0314106008
9	Schraube	Bolt	1	0314106009
10	Radflansch	wheel flange	2	0314106010
11	Typenschild des Rades	Nameplate of wheel	2	0314106011
12	Schleifscheibe	Grinder Wheel	1	0314106012
13	Schraube	Bolt	6	0314106013
14	Linker innerer Schutz	Left Inner guard	1	0314106014
15	Linke Werkzeugablage	Left tool rest	1	0314106015
16	Schraube mit Vierkantansatz	Square Neck Screw	1	0314106016
17	Unterlegscheibe	Washer	1	0314106017
18	Unterlegscheibe	Washer	1	0314106018
19	Knopfmutter	Knob Nut	1	0314106019
20	Hauptkörper	Main Body	2	0314106020
21	Schraube	Bolt	4	0314106021
22	Unterlegscheibe	Washer	4	0314106022
23	Gummifuß	Rubber Feet	4	0314106023
24	Grundplatte	Base Plate	1	0314106024
25	Kondensator	Capacitor	1	0314106025
26	Lager	Bearing	2	0314106026
27	Rotor	Rotor	1	0314106027
28	Schraube	Bolt	4	0314106028
29	Stator	Stator	1	0314106029
30	Stecker und Kabel	Plug&cord	1	0314106030
31	Kabelmutter	Cable Nut	1	0314106031
32	Kabeladapter	Cable adaptor	1	0314106032
33	Mittlerer Ring	Middle ring	1	0314106033
34	Schraube	Screw	1	0314106034
35	Typenschild	Nameplate	1	0314106035
36	Schalter	Switch	1	0314106036
37	Schalttafel	Switch Panel	1	0314106037
38	Schraube	Bolt	2	0314106038
39	Kabeladapter	Cable adaptor	1	0314106039
40	Rechter Schutz	Right guard	1	0314106040
41	Innerer Radflansch	Inner wheel flange	1	0314106041
42	Rad	Wheel	1	0314106042
43	Außerer Radkranz	Outer wheel flange	1	0314106043
44	Mutter	Nut	1	0314106044
45	Augenschutz	Eyeshield	1	0314106045

7.5 Schaltplan - Wiring diagram



GQ120_GQ150_GQ200_GQ150Q_GQ150B_partis.fm



EC Declaration of Conformity

according to Machinery Regulation 2023/1230 Annex V Part A

The manufacturer / distributor: Stürmer Maschinen GmbH
Dr.-Robert-Pfleger-Str. 26
D - 96103 Hallstadt

hereby declares that the following product

Product designation: Grinding machine

Type designation: GQ120 | GQ150 | GQ200 | GQ150Q | GQ150B

Grinding machine for private persons which meets all the relevant provisions of the above mentioned Machinery Regulation as well as the other directives applied (below) including their amendments in force at the time of declaration.

The following additional EU directives have been applied:

EMC Directive 2014/30/EU ; Restriction of the use of certain hazardous substances in electrical and electronic equipment 2015/863/EU

The following harmonized standards were applied:

EN 62841-1:2015/A11:2022 Electric motor-operated hand-held tools, transportable tools and lawn and garden machinery - Safety - Part 1: General requirements

EN 62841-3-4:2016/A12:2020 Electric motor-operated hand-held tools, transportable tools and lawn and garden machinery - Safety - Part 3-4: Particular requirements for transportable bench grinders

EN 60204-1:2019-06 Safety of machinery - Electrical equipment of machines - Part 1: General requirements

EN ISO 13849-1:2016-06 Safety of machinery - Safety-related parts of control systems

EN ISO 12100:2011-03 Safety of machinery - General principles for design - Risk assessment and risk reduction

Name and address of the person authorized to compile the technical file:

Kilian Stürmer, phone: +49 (0) 951 96555 - 800

Kilian Stürmer
(CEO, General manager)

Hallstadt, 2024-10-07